

OEM MARINE STEERING SOLUTIONS



Hyppro
MARINE

Hypro Marine - supplying and supporting the marine industry with world leading products



With over 40 years of dedicated experience in marine steering solutions, Hypro Marine has established itself as one of the most respected specialists in boat control systems worldwide.



Our core focus lies in the design and manufacture of advanced hydraulic and electronic steering systems, trusted by some of the most prestigious boat builders across the globe. Hypro Marine systems are installed in a wide range of vessels, including crew transfer vessels (CTVs), pilot boats, foiling and autonomous craft, as well as a variety of light commercial marine applications.

Our skilled workshop team provides expert servicing and refitting of our own OEM systems. We are also proud to be an authorised Dometic Marine Seastar Hydraulic Service Centre, offering full support for Seastar products.

Hypro Marine supplies steering systems for vessels up to 100 feet in length, including those requiring classification by recognised bodies such as RINA, Bureau Veritas (BV) and Lloyd's Register.



HYPRO MARINE | UK Distribution

Hypro Marine is the exclusive UK distributor for a range of premium marine products, selected for their performance, durability and innovation. We provide unmatched technical assistance and aftersales service. With our trusted partnerships and specialist knowledge, we are the go-to supplier for marine professionals seeking reliable high-performance products.

DOMETIC



Baystar, Seastar & Optimus Steering Systems, Dometic Jackplates & Trim Tabs

GLENDINNING



Cablemaster & Hosemaster

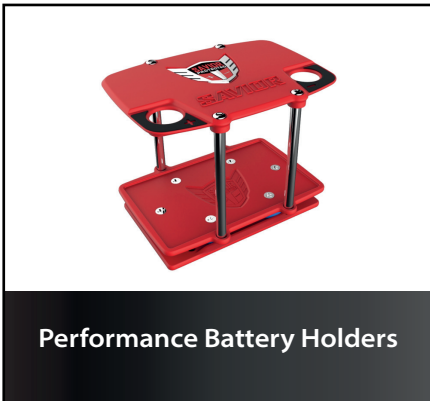
Q-SPD

SURFACE DRIVES



Surface Drive: High Performance Marine Propulsion

SAVIOR



Performance Battery Holders

SCHMITT

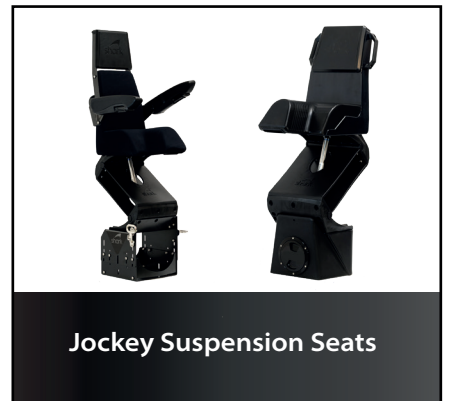
STEERING WHEELS



Steering Wheels

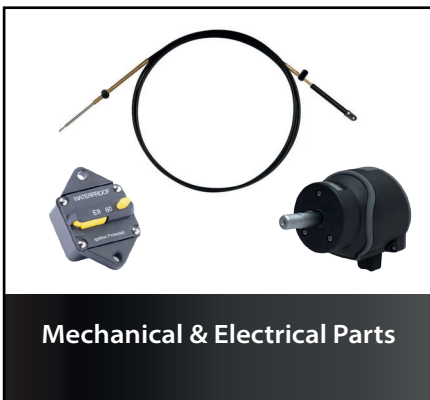
shark

SEATING



Jockey Suspension Seats

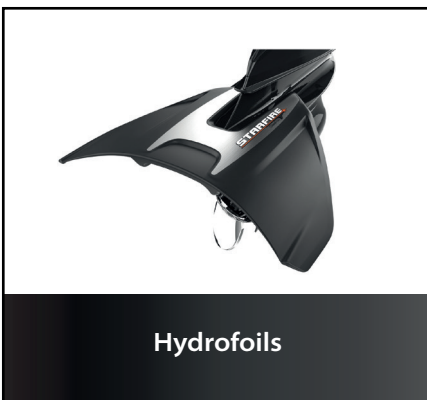
SIERRA



Mechanical & Electrical Parts

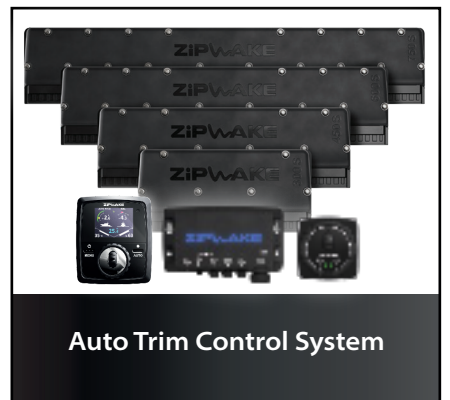
StingRay

HYDROFOILS



Hydrofoils

ZIPWAKE



Auto Trim Control System

HYPRO MARINE | Hydraulic & ECS Steering Parts

Hypro Marine specialises in the design and manufacture of advanced hydraulic and electronic steering systems for the marine industry. With a focus on precision, performance and reliability, our systems are engineered to meet the demanding requirements of vessels up to 100 feet in length. Whether for leisure, commercial or high-performance applications, Hypro Marine delivers steering solutions trusted by boat builders and operators worldwide.



HM5430/100
Reservoir Assembly



HM1272
Micro Filter



HM5095
Power Pack Assembly



HM5160
ECS Helm



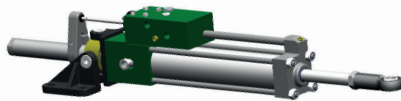
HM5290
ECS Power
Pack Unit



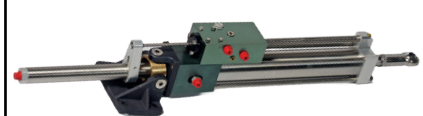
HM4040
55mm bore
Servo Power Cylinder



HM4470
55mm bore
Steering Cylinder



HM5090
55mm bore
Servo Power Cylinder



HM2940
40mm bore
Servo Power Cylinder



Engine Driven System

Hypro Marine specializes in engine-driven power steering systems, supplying solutions for motor yachts and commercial workboats up to 100 feet in length.

Features & Advantages:

- Power pumps can be fitted straight on to most popular engine/gear box PTO's
- Pumps can be specified to come fitted to engine prior to delivery
- Single or twin pump options
- Pressure and flow conditioning valve to suit, coupled to bulkhead mounted reservoir
- Optional autopilot control valve available as part of bulkhead reservoir
- Nominally 3-4 turns lock to lock highly responsive fingertip effort steering
- Automatically reverts to manual wheel steering if loss of power to pump
- Bulkhead mounted reservoir assemblies with integral filter and cooler, minimising individual component parts
- Multi station capability
- Helm pumps operate with pre charge pressure
- Helm pumps fully sealed not vented
- Able to meet torques in excess of 90,000 lb in @ 30°
- Tilt helm option available



HM5430 Reservoir
Variations available to suit different applications

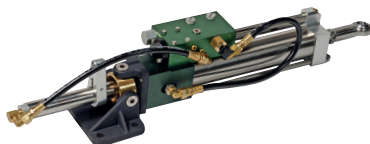


Dometic

- Fixed
- Tilt adjustable
- Front mount
- Rear mount



HM4040 Servo Cylinder
Sized to suit application



HM1886/11 PTO Driven Hydraulic Pump

Inlet Port Outlet Port





DC AC Electric Hydraulic Steering System

Hypromarine manufactures some of the lightest, most compact and responsive power steering systems available on the market. These include several of the world's most prestigious motor yacht builders as well as commercial vessel operators.

Features & Advantages:

- Independent from the engine/gearbox
- Compact Power Packs
- Separate Power and Control Circuits
- Multi Station Capability
- Reverts to manual steering if power failure occurs
- Self bleeding power circuit
- Twin Motor Power Packs available
- Bleeding either manual or using a 12v automatic power purger
- Pressurised or non-pressurised option
- Tilt helm option available
- Able to meet torques in excess of 90,000 lb in @ 30°



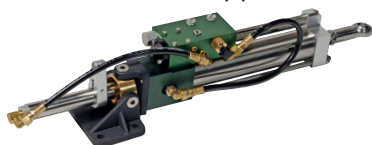
HM2042 Combined Reservoir
Variations available to suit different applications



Dometic Helm
Fixed
Tilt adjustable
Front mount
Rear mount



HM4040 Servo Cylinder
Sized to suit application



HM5457/11 Electric Motor Pump



An independent harness connects each helm to the electronic power unit.



Electronic Command Steering

Hypromarine's Electronic Command Steering (ECS) system is so forward-thinking that it has changed the way boat builders think about steering.

ECS is as responsive as hydraulics but without the time-consuming installation, resulting in significantly reduced commissioning times.

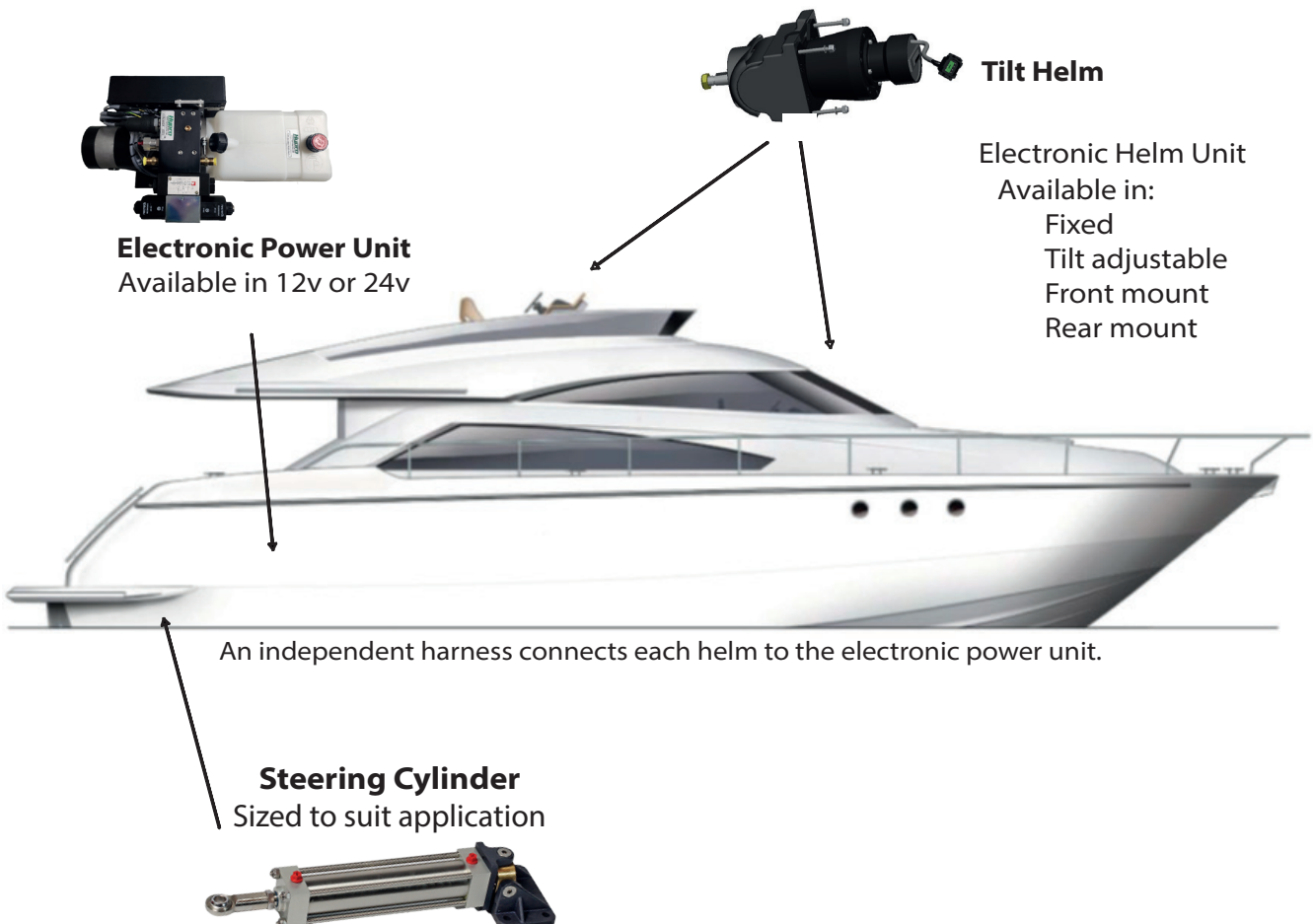
The system replaces traditional hydraulic with electronic helms which are connected to an electronic power unit via a single pre-made wiring harness with "Deutsch" multi pin connectors.

It has been designed for boats of 40ft and upwards in length but can be scaled up to in excess of 100ft.

Electronic Command Steering is now being specified into leading brands as standard.

Features & Advantages:

- No hydraulic hoses to helm positions
- No oil to helm positions
- Simplified commissioning
- Single multi core harness with Deutsch plug connector
- 4 turns lock to lock @ 1 sec/rev response rate
- Positive lock at hard over position
- Emergency back up options



Hypromarine
MARINE

www.hypromarine.com

+44 (0)1590 681445 / info@hypromarine.co.uk

