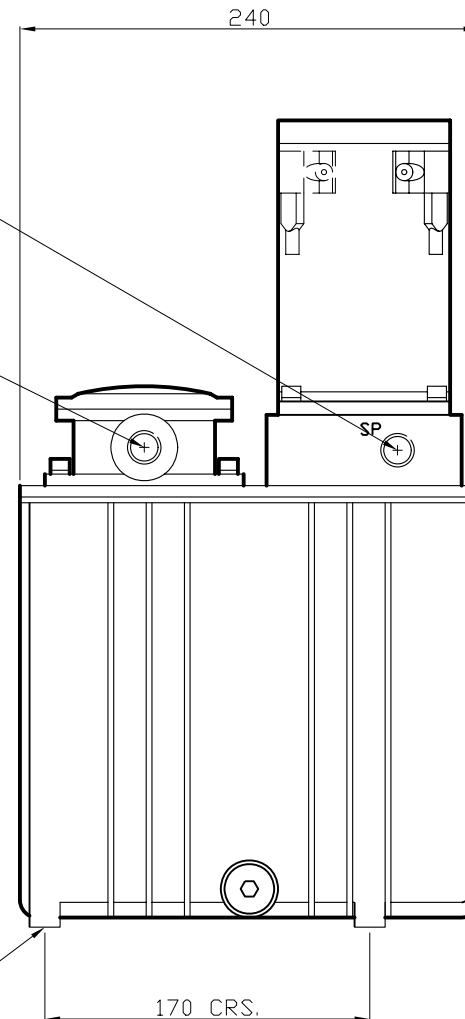


PORT 'SP' 3/8"-NPTF
TO 'SP' ON SERVO CYL.

RETURN FROM 'ST'
ON SERVO CYL.
THRO' FILTER
3/8"-NPTF

4 OFF MOUNTING HOLES
M8 x 1.25 x 12 DP.



CURRENT DRAW: TYP. 50A MAX. @ 1000PSI
TYP. 15A NO LOAD

OIL CAPACITY: 10 LITRE TO MARK
WEIGHT: 15kg WITHOUT OIL

THIS DRAWING IS THE PROPERTY OF HYPRO MARINE AND MUST NOT
BE COPIED IN WHOLE OR PART WITHOUT WRITTEN CONSENT

Hypro Marine

TITLE: ELECTRO-HYDRAULIC
PUMP UNIT
24Vd.c., 500W
CONTINUOUS RUNNING

DRAWN: MC
DATE: 3/2/05
THIRD ANGLE
PROJECTION

DRG. NO:
HM4920
ISSUE: 3 - 10126